



WILKINS FARMING CO

Environment Southland
Proposed Southland Water and Land Plan Hearing



Introduction



WILKINS FARMING CO

- Southland is a great province.
- Keep NZ's water quality in context, it is not a catastrophe.
- We need the opportunity to get it right.
- *"...its role to provide the evidence-base to inform policy and actions and to suggest the options and opportunities that exist. "*
- *"There is no universal set of solutions – in many cases the solutions will need to be catchment –specific, and some, because of the nature of the catchment, may take decades to have maximal effect"*

Family Farming Background



WILKINS FARMING CO



Settled in Otago & Southland in 1840's, sixth generation farmers in 'Old Matura'



Generational Model



WILKINS FARMING CO



- Long term sustainability
- Accountable to next generations
- Improve the legacy



Disclaimer



WILKINS FARMING CO

- Podium is not the farmers natural habitat.
- Enormous public response to the plan, community had to speak up.
- Plan needs realignment.



Understandings Develop



WILKINS FARMING CO

- Know more tomorrow than we do today.
- Water quality is a relatively new concept in NZ's 150 year farming history.
- Plan needs to be malleable and able to embrace new understandings.
- Time to improve models and extension of good management practise.
- Find the sweet spot of protecting both water and farming interests.



Empathy for all Parties



WILKINS FARMING CO

- Water quality needs context & perspective.
- No need to discriminate or polarise industries & communities.
- Farming needs the opportunity to evolve and implement change.



Urban & Rural work together



WFC Grain Harvest Crew



Context of Current Farming Environment



WILKINS FARMING CO

- Generational game, not here to realise capital values.
- Land use restrictions are unfair, regulation has hit dairy farming and Old Matura the hardest (and Peat Wetland zones)
- Farmers are sailing close to the wind at present, 2 years of historical lows...further capital erosion could compromise business viability.
- Do not underestimate the MENTAL TOLL OF THE PLAN...some unpleasant memories of the 80's for many of us.

Context of Current Farming Environment



WILKINS FARMING CO

- Water quality a relatively new concept in farming.
- Generations of hard work & investment threatened...Capital Erosion.
- Southlands prosperity improved in 90's on the back of farming.
- Farm income receipts recycled repeatedly through community.

Context of Current Farming Environment



WILKINS FARMING CO

- Water quality a relatively new concept in farming.
- Generations of hard work & investment threatened...Capital Erosion.
- Southlands prosperity improved in 90's on the back of farming.
- Farm income receipts recycled repeatedly through community.

Farmers must win the ball for Southland to play with....or we come 2nd.



Regulatory overkill? – taken eye off the ball?



Environment Southland and Community Relationship



WILKINS FARMING CO

- We support the ideal to protect water quality & objectives of the plan.
- Sweet spot has been missed causing much unnecessary strain to both community and ES alike, MUST read the signals and adjust....
- Cost benefit analysis falls short of RMA requirement.
- Will the plan meet water quality objectives?

This plan has large scale & significance upon Southlands number one sector

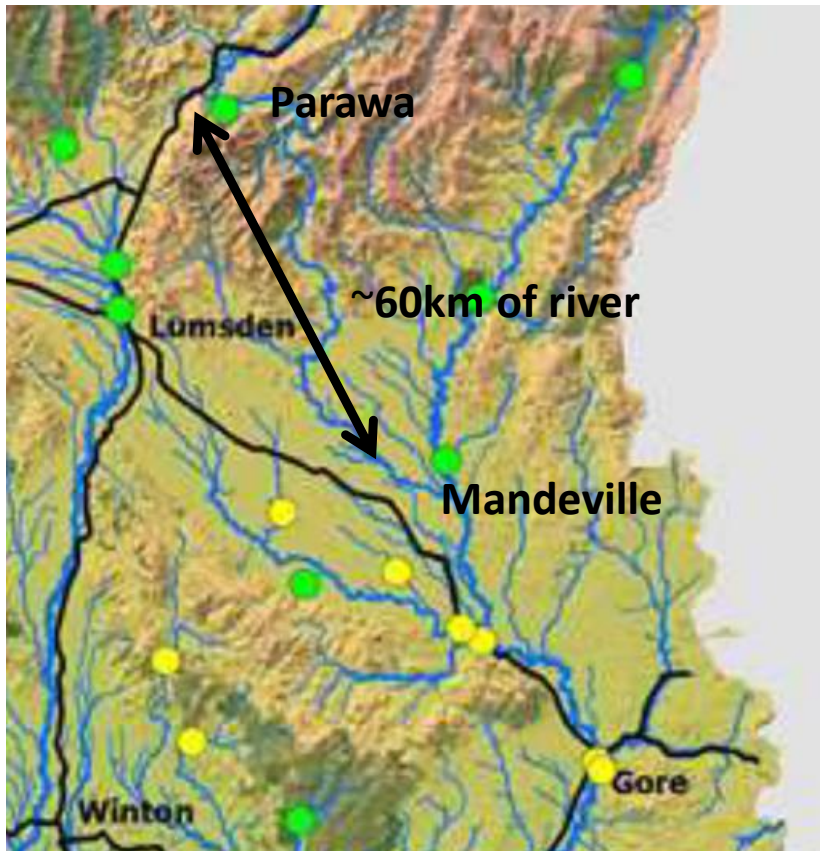
→
Waimumu Field Days



Premium Prices Paid for Restricted Land



WILKINS FARMING CO



- Compensation for restriction of land use?
- Lack of standardised testing, surface waters and ground waters...compromised wells?
- Lack of time between release & submission.
- Window shopped evidence, rushed regulation and erroneous decision making.
- Allow time for relationship between GMP's and water quality to unfold.



WILKINS FARMING CO

Physiographic Zones

- Physiographic Zones (PZ's) be left beyond the plan.
- Merit in PZ's for identifying generalities.
- Application been poor in a planning context.
- Reduce restrictions on Old Matura in line with Oxidising, Riverine & Central Plains.
- Need the opportunity to adjust.
- Incentivise progression & technology.

Looking South from Garvie Mountains
over Wendonside Plains & Waimea Valley



Physiographic Zones



WILKINS FARMING CO

- Is Wendonside groundwater a greater risk to WIDER society and water quality?
- Current understanding of relationship between farm practises upon aquifer water quality upon surface water is limited....Mataura & Waikaia rivers.
- Wendonside restricted more harsh because less people?
- Emphasis shift from dictation of land use to promotion of GMP's.
- Unfair competitive disadvantage vs other PZ's and Otago Region.

Physiographic Zones



WILKINS FARMING CO

- Is Wendonside groundwater a greater risk to WIDER society and water quality?
- Current understanding of relationship between farm practises upon aquifer water quality upon surface water is limited....Mataura & Waikaia rivers.
- Wendonside restricted more harsh because less people?
- Emphasis shift from dictation of land use to promotion of GMP's.
- Unfair competitive disadvantage vs other PZ's and Otago Region.



"If it ain't broke...don't fix it"

Catchment Groups



WILKINS FARMING CO

- Progressive solution, achieving community engagement.
- Will further bureaucracy achieve better water quality?
- Extend expertise, coproduce knowledge in local context, embrace local experience.

Looking North into Garvie Mountain foothills



Catchment Groups



WILKINS FARMING CO

- Communities will be more responsive to CG's.....consenting as fall back option?
- Fix the cause.....not the symptoms – STOP THE BLEED!
- Emphasise solutions...adopt technology to mitigate adverse effects.
- Generational locals left to clean up the mess.



Reduce the Leakage



WILKINS FARMING CO

- Nutrient safe dairy model on Wendonside Plain.
- Maximise nutrient capture, apply in growing season, avoid leakage below root-zone.
- Proposed plan restricts incentive to develop farm model, disempowers progression.
- GMP's create more saleable farming model....able to demand more for produce filtering back through local community.

Rule 22 – New or Expanding Dairy Farms



WILKINS FARMING CO

- “Strongly discouraged” and “Non – complying” too harsh.
- Reduce restrictions in line with Oxidising, Riverine and Central Plains.
- Current restrictions undermines existing investment in infrastructure with provision for growth.



CDL Staff

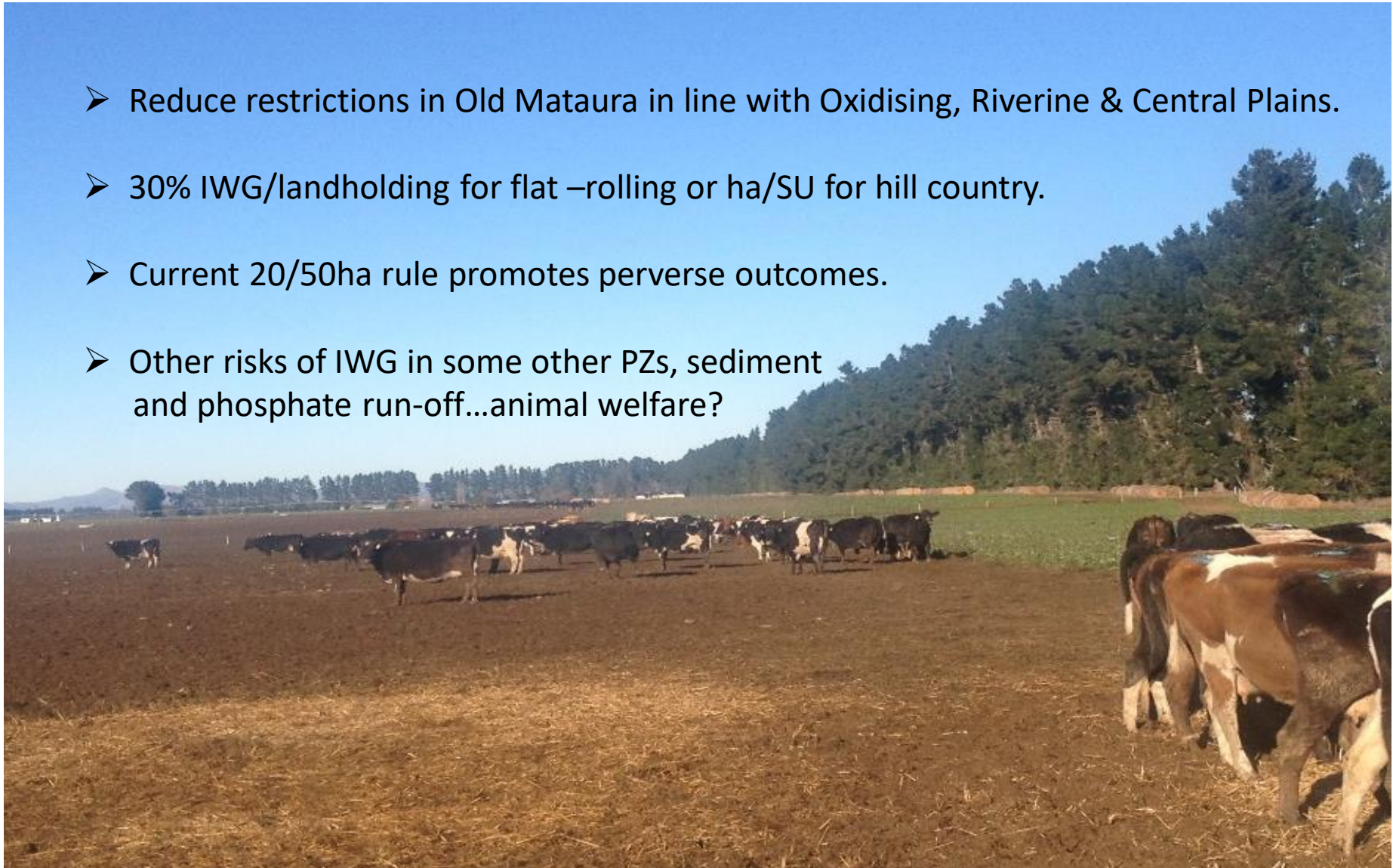


Rule 23 – Intensive Winter Grazing



WILKINS FARMING CO

- Reduce restrictions in Old Matura in line with Oxidising, Riverine & Central Plains.
- 30% IWG/landholding for flat –rolling or ha/SU for hill country.
- Current 20/50ha rule promotes perverse outcomes.
- Other risks of IWG in some other PZs, sediment and phosphate run-off...animal welfare?



Rule 23 – Intensive Winter Grazing



WILKINS FARMING CO

- Why restrict one feed pad/landholding?
- 3m setback from waterways excessive in Wendonside flat ground...600mm satisfactory



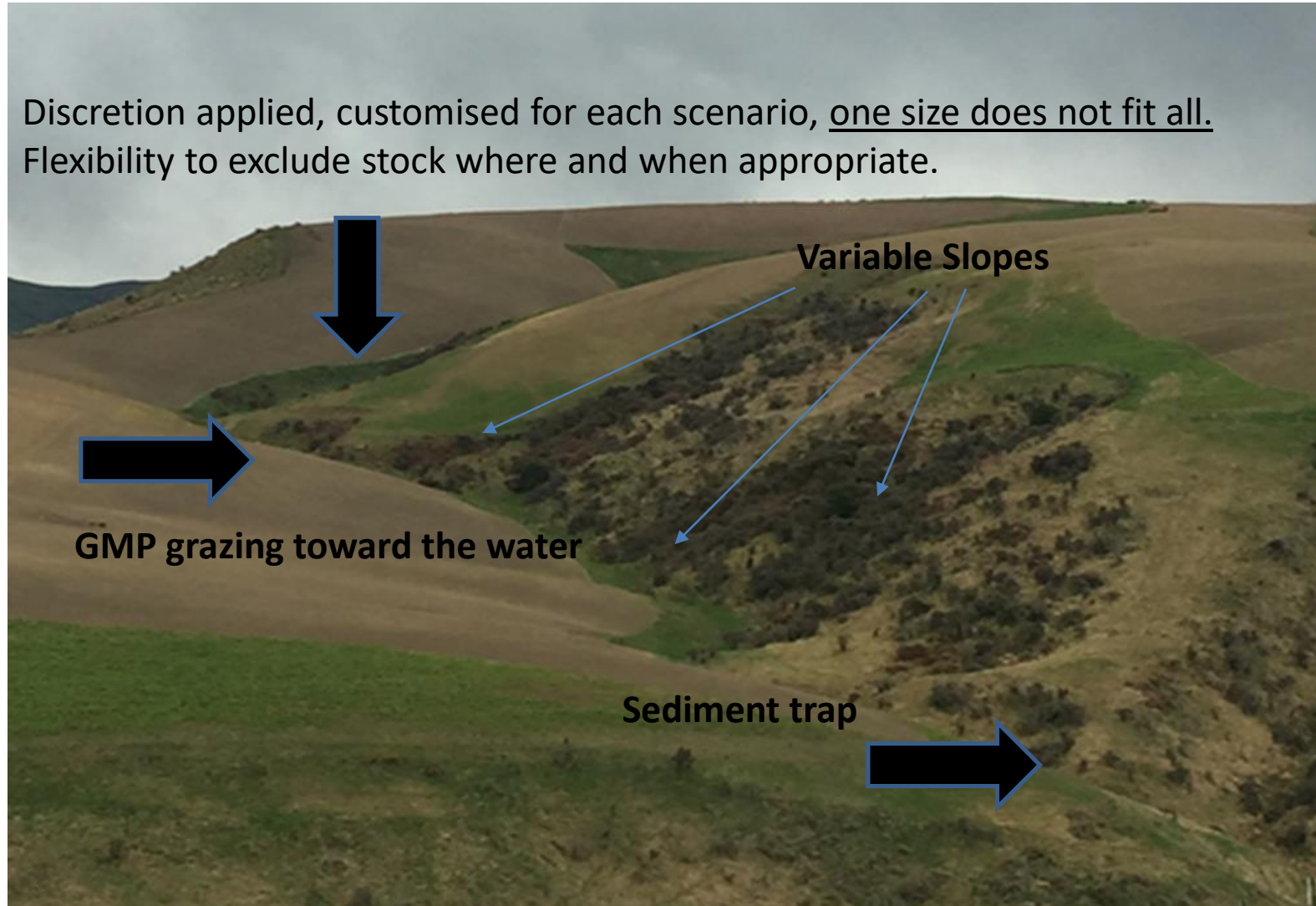
Rule 25 & 70

Stock Exclusion & Cultivation



WILKINS FARMING CO

Discretion applied, customised for each scenario, one size does not fit all.
Flexibility to exclude stock where and when appropriate.



Rule 70 – Stock Exclusion



WILKINS FARMING CO

- Existing stock exclusion rules will be the end of deer & cattle in the hill & high country.
- Support the rule of non exclusion of sheep from waterways.



Deer survival and welfare is maximised on hill & high country...natural habitat.

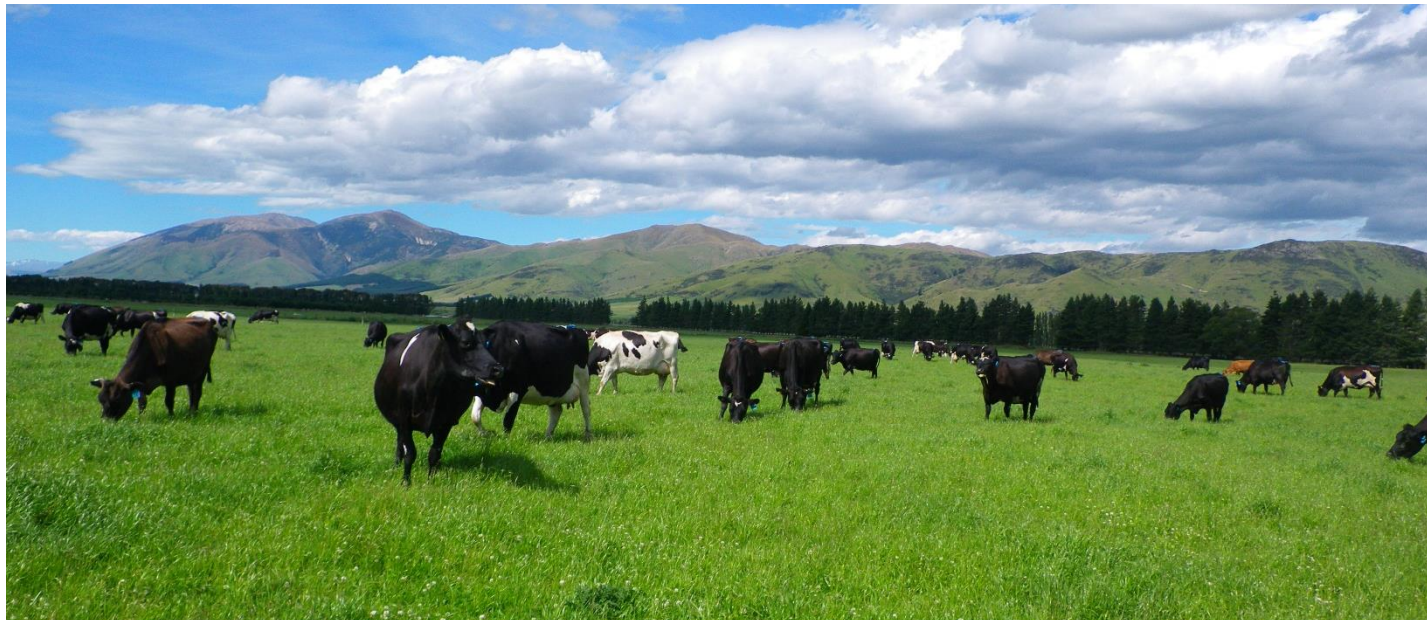


Dairy Farms – William Bole



WILKINS FARMING CO

- Background, from North Otago to Southland.
- Evolution of dairy farming conscience, environmental & economic synergies.
- Need to incentivise further industry improvements, not restrict.
- Farm ownership and generational model through dairy farming.



Farmer & WFC Employee Sue Miller

- Evolution of WFC
- Workforce
- Flow on to the community



Lessor – Lindsay Wright



WILKINS FARMING CO

- Old Matura Physiographic Zone
- Landholding and Intensive Winter Grazing
- Choice of land-use operation
- Human Impact
- Wendonside Catchment Group



Summary

- High level plan cannot capture subtleties and nuances of farming dynamics
- Embrace experience, intuition and localised/customised management – catchment groups
- Retain context, time is our friend...develop understanding of farm practise & water quality
- Give the province the opportunity to embrace change and apply solutions
- Work together to protect both water & farming interests





WILKINS FARMING CO

Thank You



All farm photos in this presentation taken on WFC property