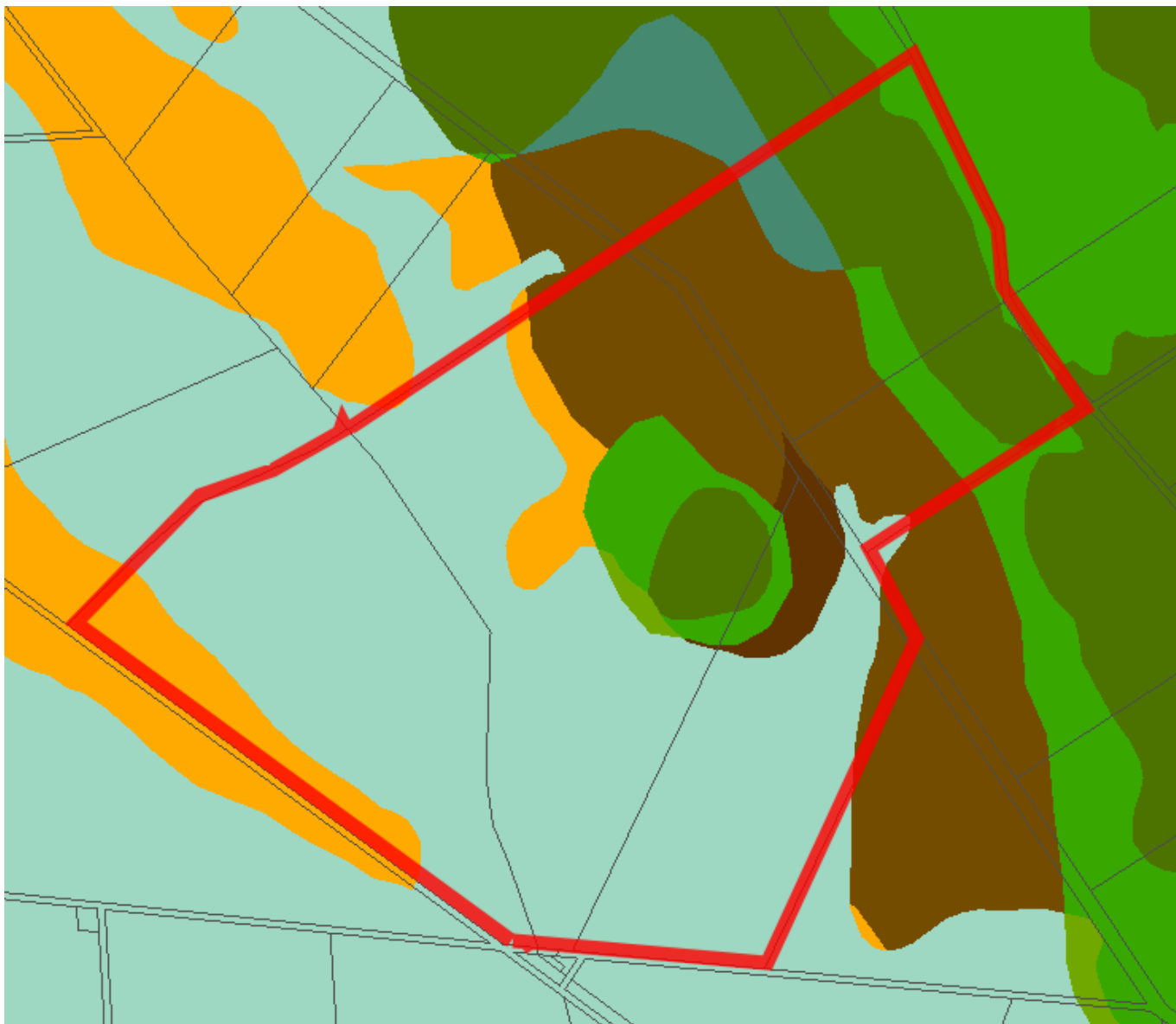


1



Environment Southland

State of the Environment: Groundwater Quality Technical Report

Liquid Earth May 2010

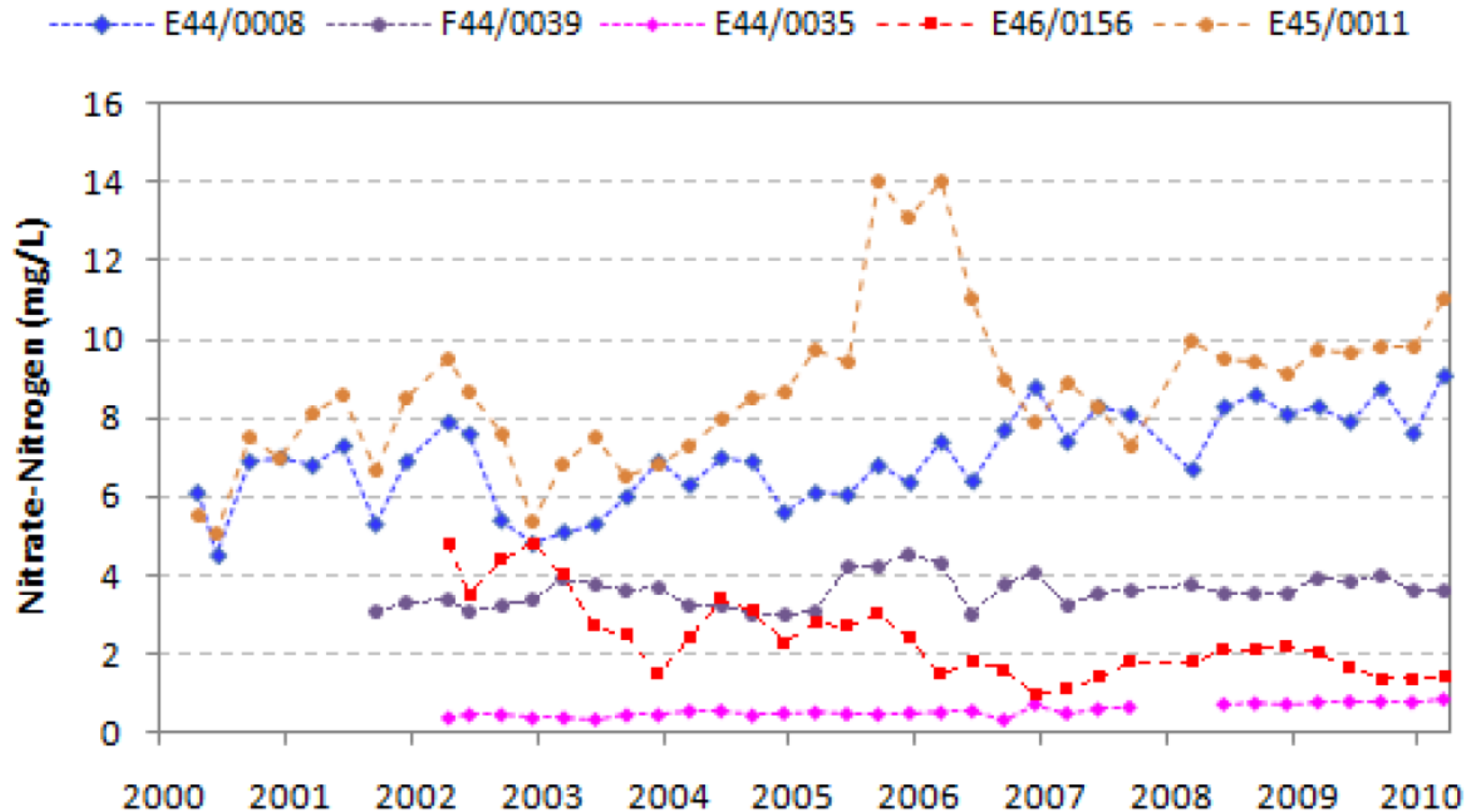


Figure 22. Observed temporal trends in groundwater nitrate concentrations at selected monitoring sites

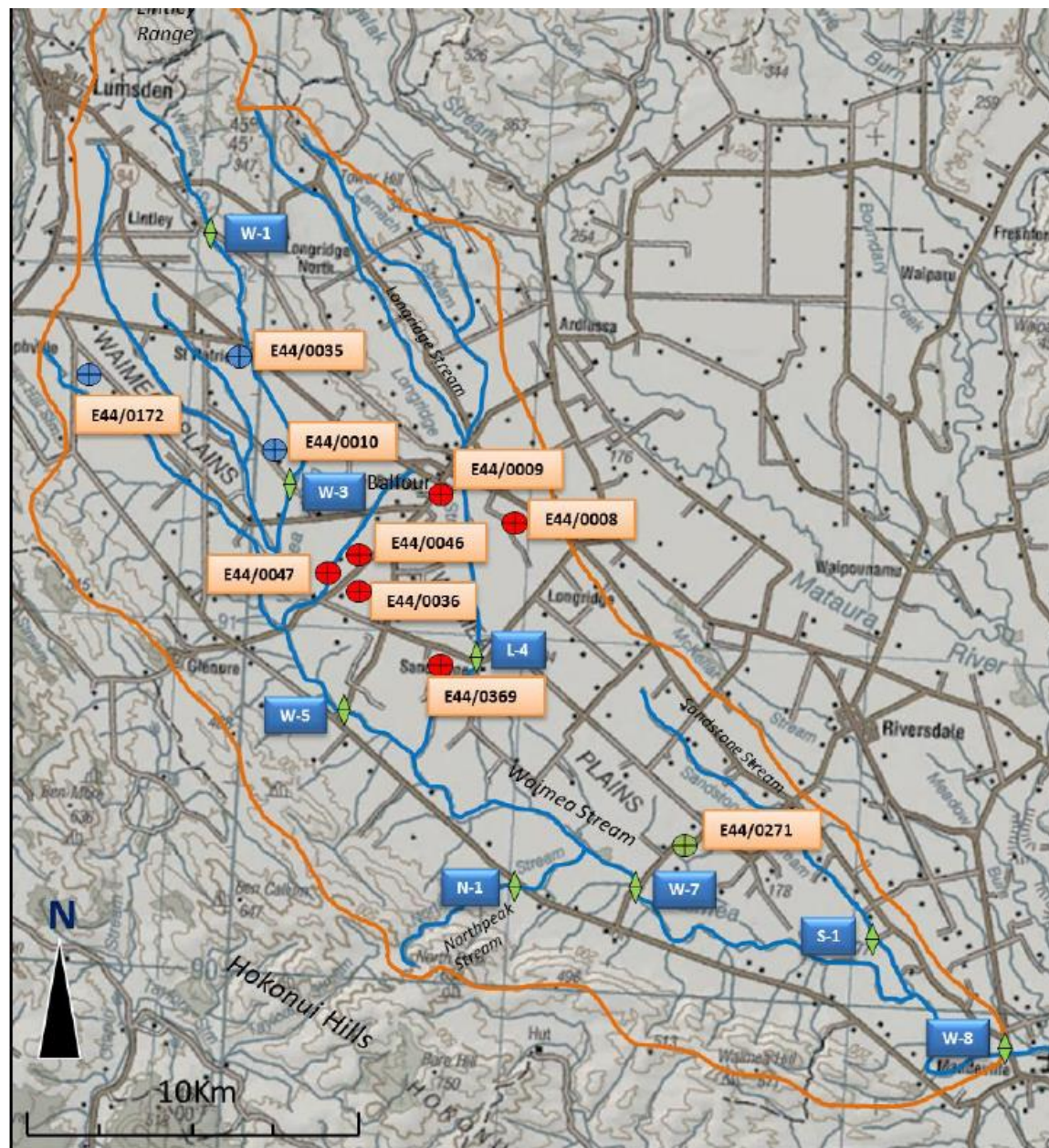


Figure 3-18 Environment Southland surface water monitoring sites and groundwater monitoring bores. Surface water monitoring sites on the Waimea Stream (W-1,3,5,7,8), Longridge Stream (L-4), North Peak Stream (N-1) and Sandstones Stream (S-1) are displayed (green diamonds). Crosshairs represent groundwater bores and are in three groups (blue= upper Waimea, red= Balfour nitrate hotspot, green= lower Waimea). The orange line is the approximate catchment of the Waimea Stream.